



PSE TEST REPORT  
For

KHADAS TECHNOLOGY CO., LTD  
Tone2 Hi-Fi USB DAC Audio Board  
Test Model: Tone2 Maker Kit

Prepared for : KHADAS TECHNOLOGY CO., LTD  
Address : 2709 QIANCHENG CENTER, HAICHENG  
ROAD, XIXIANG STREET, BAO'AN DISTRICT,  
SHENZHEN, CHINA. 518101

Prepared by : Shenzhen LCS Compliance Testing Laboratory  
Ltd.  
Address : Room 101, 201, Building A and Room 301,  
Building C, Juji Industrial Park, Yabianxueziwei,  
Shajing Street, Bao'an District, Shenzhen,  
Guangdong, China  
Tel : (86)755-82591330  
Fax : (86)755-82591332  
Web : www.LCS-cert.com  
Mail : webmaster@LCS-cert.com

Date of receipt of test sample : September 08, 2022  
Number of tested samples : 1  
Sample No : A090722063  
Date of Test : September 08, 2022 ~ September 13, 2022  
Date of Report : September 14, 2022



Shenzhen LCS Compliance Testing Laboratory Ltd.

Add: Room 101, 201, Building A and Room 301, Building C, Juji Industrial Park, Yabianxueziwei, Shajing Street,  
Bao'an District, Shenzhen, Guangdong, China

Tel: +(86) 0755-82591330 | E-mail: [webmaster@lcs-cert.com](mailto:webmaster@lcs-cert.com) | Web: [www.lcs-cert.com](http://www.lcs-cert.com)

Scan code to check authenticity

**PSE TEST REPORT****J55032 (H29)****Report Reference No. ....: LCSA090722063E****Date Of Issue.....: September 14, 2022****Testing Laboratory Name ....: Shenzhen LCS Compliance Testing Laboratory Ltd.****Address.....: Room 101, 201, Building A and Room 301, Building C, Juji Industrial Park, Yabianxueziwei, Shajing Street, Bao'an District, Shenzhen, Guangdong, China****Testing Location/ Procedure ..: Full application of Harmonised standards ■  
Partial application of Harmonised standards □  
Other standard testing method □****Applicant's Name.....: KHADAS TECHNOLOGY CO., LTD****Address.....: 2709 QIANCHENG CENTER, HAICHENG ROAD, XIXIANG STREET, BAO'AN DISTRICT, SHENZHEN, CHINA. 518101****Test Specification:****Standard .....: J55032 (H29)****Test Report Form No.....: LCSEMC-1.0****TRF Originator .....: Shenzhen LCS Compliance Testing Laboratory Ltd.****Master TRF .....: Dated 2011-03****SHENZHEN LCS COMPLIANCE TESTING LABORATORY LTD. All rights reserved.**

This publication may be reproduced in whole or in part for non-commercial purposes as long as the SHENZHEN LCS COMPLIANCE TESTING LABORATORY LTD. is acknowledged as copyright owner and source of the material. SHENZHEN LCS COMPLIANCE TESTING LABORATORY LTD. takes no responsibility for and will not assume liability for damages resulting from the reader's interpretation of the reproduced material due to its placement and context.

**Test Item Description.....: Tone2 Hi-Fi USB DAC Audio Board****Trade Mark.....: KHADAS****Test Model .....: Tone2 Maker Kit****Ratings.....: Please Refer to Page 7****Result .....: Positive****Compiled by:**

Coco Song/ File administrators

**Supervised by:**

Baron Wen/Technique principal

**Approved by:**

Gavin Liang/ Manager



Shenzhen LCS Compliance Testing Laboratory Ltd.

Add: Room 101, 201, Building A and Room 301, Building C, Juji Industrial Park, Yabianxueziwei, Shajing Street, Bao'an District, Shenzhen, Guangdong, China

Tel: +(86) 0755-82591330 | E-mail: [webmaster@lcs-cert.com](mailto:webmaster@lcs-cert.com) | Web: [www.lcs-cert.com](http://www.lcs-cert.com)

Scan code to check authenticity



## PSE -- TEST REPORT

**Test Report No. : LCSA090722063E**September 14, 2022

Date of issue

Test Model..... : Tone2 Maker Kit

EUT..... : Tone2 Hi-Fi USB DAC Audio Board

**Applicant..... : KHADAS TECHNOLOGY CO., LTD**Address..... : 2709 QIANCHENG CENTER, HAICHENG ROAD,  
XIXIANG STREET, BAO'AN DISTRICT, SHENZHEN,  
CHINA. 518101

Telephone..... : /

Fax..... : /

**Manufacturer..... : KHADAS TECHNOLOGY CO., LTD**Address..... : 2709 QIANCHENG CENTER, HAICHENG ROAD,  
XIXIANG STREET, BAO'AN DISTRICT, SHENZHEN,  
CHINA. 518101

Telephone..... : /

Fax..... : /

**Factory..... : KHADAS TECHNOLOGY CO., LTD**Address..... : 2709 QIANCHENG CENTER, HAICHENG ROAD,  
XIXIANG STREET, BAO'AN DISTRICT, SHENZHEN,  
CHINA. 518101

Telephone..... : /

Fax..... : /

**Test Result** according to the standards on page 6: **Positive**

The test report merely corresponds to the test sample.

It is not permitted to copy extracts of these test result without the written permission of the test laboratory.



Shenzhen LCS Compliance Testing Laboratory Ltd.

Add: Room 101, 201, Building A and Room 301, Building C, Juji Industrial Park, Yabianxueziwei, Shajing Street,  
Bao'an District, Shenzhen, Guangdong, ChinaTel: +(86) 0755-82591330 | E-mail: [webmaster@lcs-cert.com](mailto:webmaster@lcs-cert.com) | Web: [www.lcs-cert.com](http://www.lcs-cert.com)

Scan code to check authenticity



## Revision History

Revision	Issue Date	Revisions Content	Revised By
000	September 14, 2022	Initial Issue	/



Shenzhen LCS Compliance Testing Laboratory Ltd.

Add: Room 101, 201, Building A and Room 301, Building C, Juji Industrial Park, Yabianxueziwei, Shajing Street, Bao'an District, Shenzhen, Guangdong, China

Tel: +(86) 0755-82591330 | E-mail: [webmaster@lcs-cert.com](mailto:webmaster@lcs-cert.com) | Web: [www.lcs-cert.com](http://www.lcs-cert.com)

Scan code to check authenticity



## TABLE OF CONTENT

Test Report Description	Page
<b>1. SUMMARY OF STANDARDS AND RESULTS</b> .....	<b>6</b>
1.1. Description of Standards and Results .....	6
<b>2. GENERAL INFORMATION</b> .....	<b>7</b>
2.1. Description of Device (EUT).....	7
2.2. Support Equipment List.....	7
2.3. Description of Test Facility .....	7
2.4. Statement of the Measurement Uncertainty .....	8
2.5. Measurement Uncertainty .....	8
<b>3. TEST RESULTS</b> .....	<b>9</b>
3.1 RADIATED EMISSION MEASUREMENT.....	9
<b>4. PHOTOGRAPHS OF TEST SETUP</b> .....	<b>13</b>
<b>5. EXTERNAL AND INTERNAL PHOTOS OF THE EUT</b> .....	<b>14</b>





## 1. SUMMARY OF STANDARDS AND RESULTS

### 1.1. Description of Standards and Results

The EUT have been tested according to the applicable standards as referenced below.

EMISSION			
Description of Test Item	Standard	Limits	Results
Conducted disturbance at mains terminals	J55032 (H29)	-----	N/A
Conducted disturbance at telecommunication port	J55032 (H29)	-----	N/A
Radiated disturbance	J55032 (H29)	-----	PASS
N/A is an abbreviation for Not Applicable.			

Test mode:		
Mode	Working	Record
***Note: All test modes were tested, but we only recorded the worst case in this report.		





## 2. GENERAL INFORMATION

### 2.1. Description of Device (EUT)

EUT : Tone2 Hi-Fi USB DAC Audio Board

Trade Mark : KHADAS

Test Model : Tone2 Maker Kit

Power Supply : Input: 5V  $\pm$ 450mA, 2.25W

### 2.2. Support Equipment List

Name	Manufacturers	M/N	S/N
PC	Lenovo	WB0202140H	WB05067151

### 2.3. Description of Test Facility

Site Description

EMC Lab.

: NVLAP Accreditation Code is 600167-0.

FCC Designation Number is CN5024.

CAB identifier is CN0071.

CNAS Registration Number is L4595.



Shenzhen LCS Compliance Testing Laboratory Ltd.

Add: Room 101, 201, Building A and Room 301, Building C, Juji Industrial Park, Yabianxueziwei, Shajing Street, Bao'an District, Shenzhen, Guangdong, China

Tel: +(86) 0755-82591330 | E-mail: [webmaster@lcs-cert.com](mailto:webmaster@lcs-cert.com) | Web: [www.lcs-cert.com](http://www.lcs-cert.com)

Scan code to check authenticity





## 2.4.Statement of the Measurement Uncertainty

The data and results referenced in this document are true and accurate. The reader is cautioned that there may be errors within the calibration limits of the equipment and facilities. The measurement uncertainty was calculated for all measurements listed in this test report acc. To CISPR 16 – 4 “Specification for radio disturbance and immunity measuring apparatus and methods – Part 4: Uncertainty in EMC Measurements” and is documented in the LCS quality system acc. To DIN EN ISO/IEC 17025. Furthermore, component and process variability of devices similar to that tested may result in additional deviation. The manufacturer has the sole responsibility of continued compliance of the device.

## 2.5.Measurement Uncertainty

Test	Parameters	Expanded Uncertainty (Ulab)	Expanded Uncertainty (Ucisp)
Conducted Emission	Level accuracy (9kHz to 150kHz) (150kHz to 30MHz)	$\pm 2.63$ dB $\pm 2.35$ dB	$\pm 3.8$ dB $\pm 3.4$ dB
Power Disturbance	Level accuracy (30MHz to 300MHz)	$\pm 2.90$ dB	$\pm 4.5$ dB
Electromagnetic Radiated Emission (3-loop)	Level accuracy (9kHz to 30MHz)	$\pm 3.60$ dB	$\pm 3.3$ dB
Radiated Emission	Level accuracy (9kHz to 30MHz)	$\pm 3.68$ dB	N/A
Radiated Emission	Level accuracy (30MHz to 1000MHz)	$\pm 3.48$ dB	$\pm 5.3$ dB
Radiated Emission	Level accuracy (above 1000MHz)	$\pm 3.90$ dB	$\pm 5.2$ dB

(1) Where relevant, the following measurement uncertainty levels have been estimated for tests performed on the apparatus.

(2) The reported expanded uncertainty of measurement is stated as the standard uncertainty of measurement multiplied by the coverage factor of  $k=2$ , which for a normal distribution corresponds to a coverage probability of approximately 95%.



Shenzhen LCS Compliance Testing Laboratory Ltd.

Add: Room 101, 201, Building A and Room 301, Building C, Juji Industrial Park, Yabianxueziwei, Shajing Street, Bao'an District, Shenzhen, Guangdong, China

Tel: +(86) 0755-82591330 | E-mail: [webmaster@lcs-cert.com](mailto:webmaster@lcs-cert.com) | Web: [www.lcs-cert.com](http://www.lcs-cert.com)

Scan code to check authenticity





### 3.TEST RESULTS

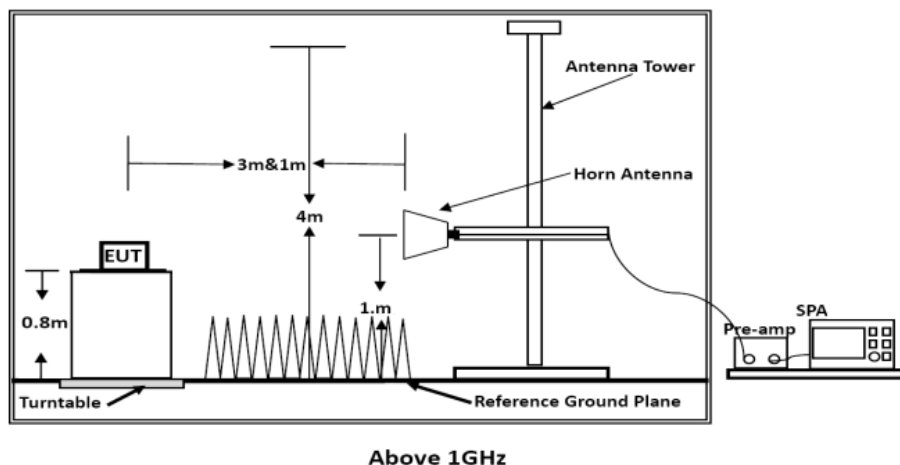
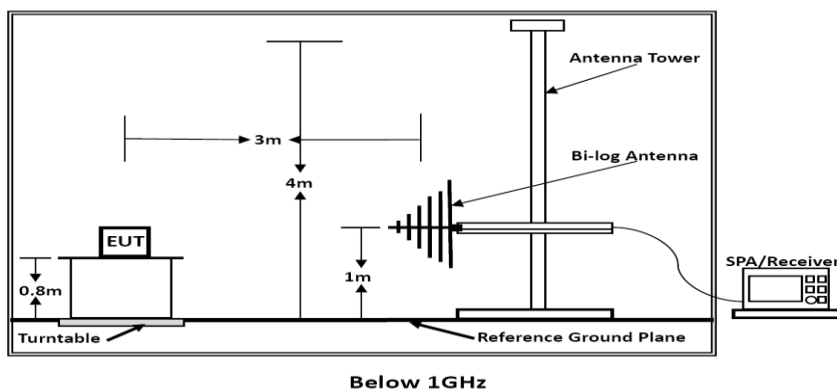
#### 3.1 RADIATED EMISSION MEASUREMENT

##### 3.1.1. Test Equipment

The following test equipments are used during the radiated emission measurement:

Item	Equipment	Manufacturer	Model No.	Serial No.	Cal Date	Due Date
1	EMI Test Software	AUDIX	E3	/	N/A	N/A
2	By-log Antenna	SCHWARZBECK	VULB9163	9163-470	2021-09-12	2024-09-11
3	Horn Antenna	SCHWARZBECK	BBHA 9120D	9120D-1925	2021-09-05	2024-09-04
4	EMI Test Receiver	R&S	ESR3	102311	2022-08-17	2023-08-16
5	Broadband Preamplifier	/	BP-01M18G	P190501	2022-06-16	2023-06-15

##### 3.1.2. Block Diagram of Test Setup



##### 3.1.3.Measuring Standard

J55032 (H29)



Shenzhen LCS Compliance Testing Laboratory Ltd.

Add: Room 101, 201, Building A and Room 301, Building C, Juji Industrial Park, Yabianxueziwei, Shajing Street, Bao'an District, Shenzhen, Guangdong, China

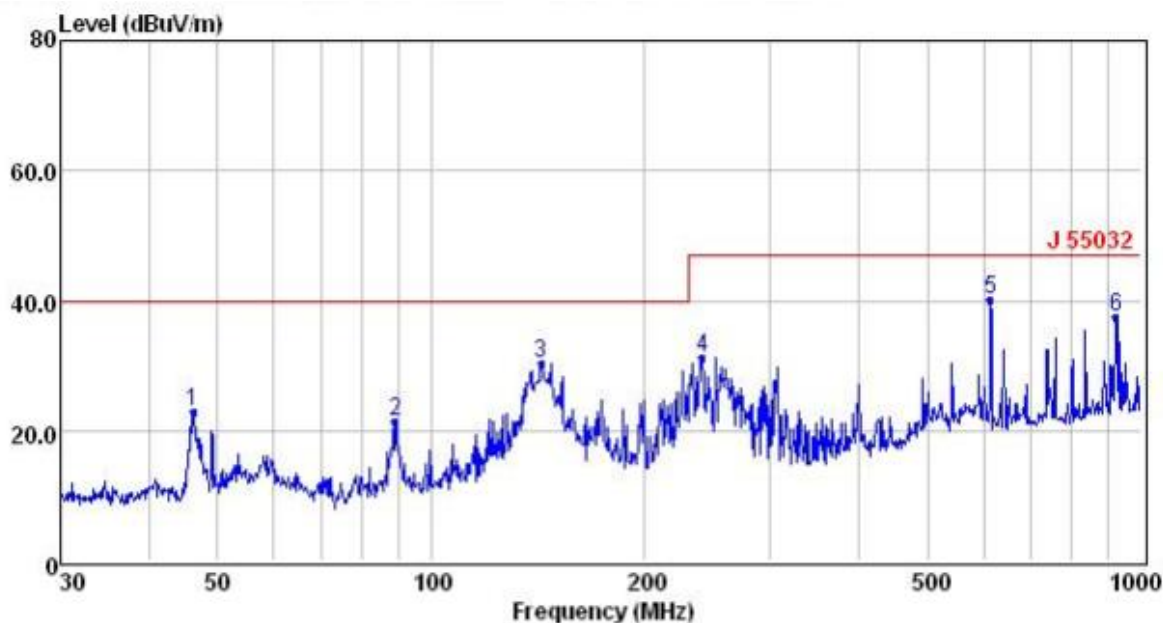
Tel: +(86) 0755-82591330 | E-mail: [webmaster@lcs-cert.com](mailto:webmaster@lcs-cert.com) | Web: [www.lcs-cert.com](http://www.lcs-cert.com)

Scan code to check authenticity





Test Model	Tone2 Maker Kit	Test Mode	Working
Environmental Conditions	22.3°C, 53.1% RH	Detector Function	Quasi-peak
Pol	Vertical	Distance	3m
Test Engineer	Zero Qi	Test Voltage	DC



	Freq	Reading	CabLos	Antfac	Measured	Limit	Over	Remark
	MHz	dBuV	dB	dB/m	dBuV/m	dBuV/m	dB	
1	46.18	10.77	0.57	11.69	23.03	40.00	-16.97	QP
2	88.96	11.12	0.77	9.53	21.42	40.00	-18.58	QP
3	142.82	20.81	1.01	8.56	30.38	40.00	-9.62	QP
4	240.83	17.88	1.25	12.22	31.35	47.00	-15.65	QP
5	614.21	19.53	1.55	19.10	40.18	47.00	-6.82	QP
6	922.52	13.49	2.12	21.75	37.36	47.00	-9.64	QP

Note: 1. All readings are Quasi-peak values.

2. Measured= Reading + Antenna Factor + Cable Loss

3. The emission that are 20db below the official limit are not reported



Shenzhen LCS Compliance Testing Laboratory Ltd.

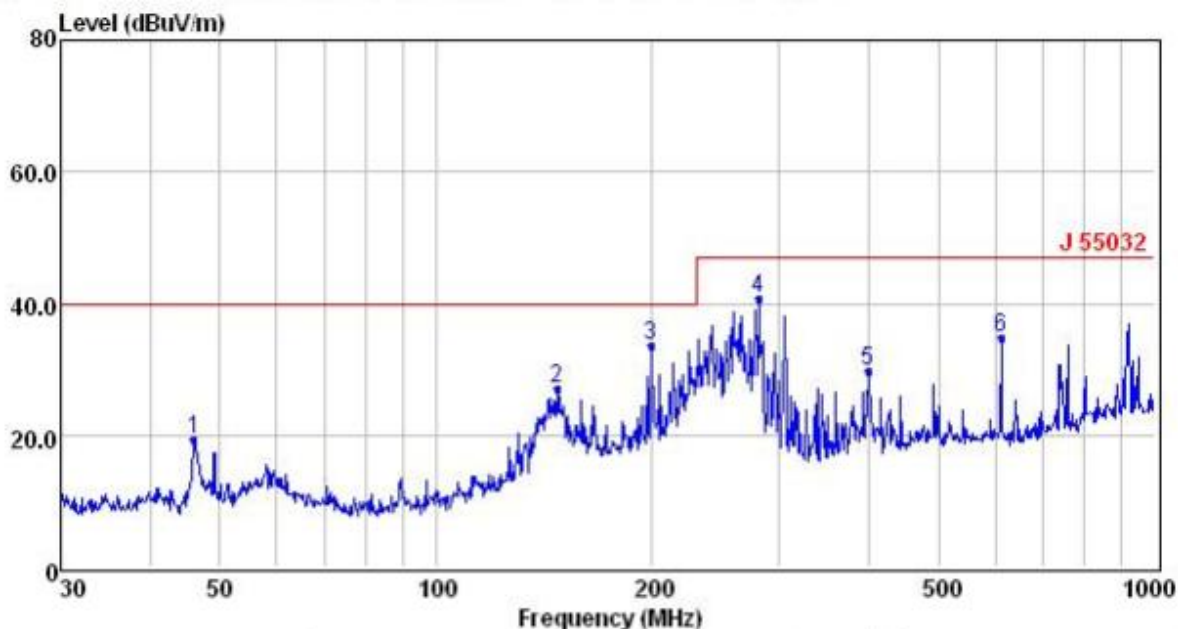
Add: Room 101, 201, Building A and Room 301, Building C, Juji Industrial Park, Yabianxueziwei, Shajing Street, Bao'an District, Shenzhen, Guangdong, China

Tel: +(86) 0755-82591330 | E-mail: [webmaster@lcs-cert.com](mailto:webmaster@lcs-cert.com) | Web: [www.lcs-cert.com](http://www.lcs-cert.com)

Scan code to check authenticity



Test Model	Tone2 Maker Kit	Test Mode	Working
Environmental Conditions	22.3℃, 53.1% RH	Detector Function	Quasi-peak
Pol	Horizontal	Distance	3m
Test Engineer	Zero Qi	Test Voltage	DC



	Freq	Reading	CabLos	Antfac	Measured	Limit	Over	Remark
	MHz	dBuV	dB	dB/m	dBuV/m	dBuV/m	dB	
1	46.02	7.24	0.57	11.65	19.46	40.00	-20.54	QP
2	147.40	17.46	1.02	8.65	27.13	40.00	-12.87	QP
3	199.29	21.65	1.20	10.77	33.62	40.00	-6.38	QP
4	281.01	26.03	1.30	13.32	40.65	47.00	-6.35	QP
5	399.03	13.66	1.40	14.69	29.75	47.00	-17.25	QP
6	612.06	14.15	1.54	19.13	34.82	47.00	-12.18	QP

Note: 1. All readings are Quasi-peak values.

2. Measured= Reading + Antenna Factor + Cable Loss

3. The emission that are 20db below the official limit are not reported

Note: Pre-Scan all mode, Thus record worse case mode result in this report.



Shenzhen LCS Compliance Testing Laboratory Ltd.

Add: Room 101, 201, Building A and Room 301, Building C, Juji Industrial Park, Yabianxueziwei, Shajing Street, Bao'an District, Shenzhen, Guangdong, China

Tel: +(86) 0755-82591330 | E-mail: [webmaster@lcs-cert.com](mailto:webmaster@lcs-cert.com) | Web: [www.lcs-cert.com](http://www.lcs-cert.com)

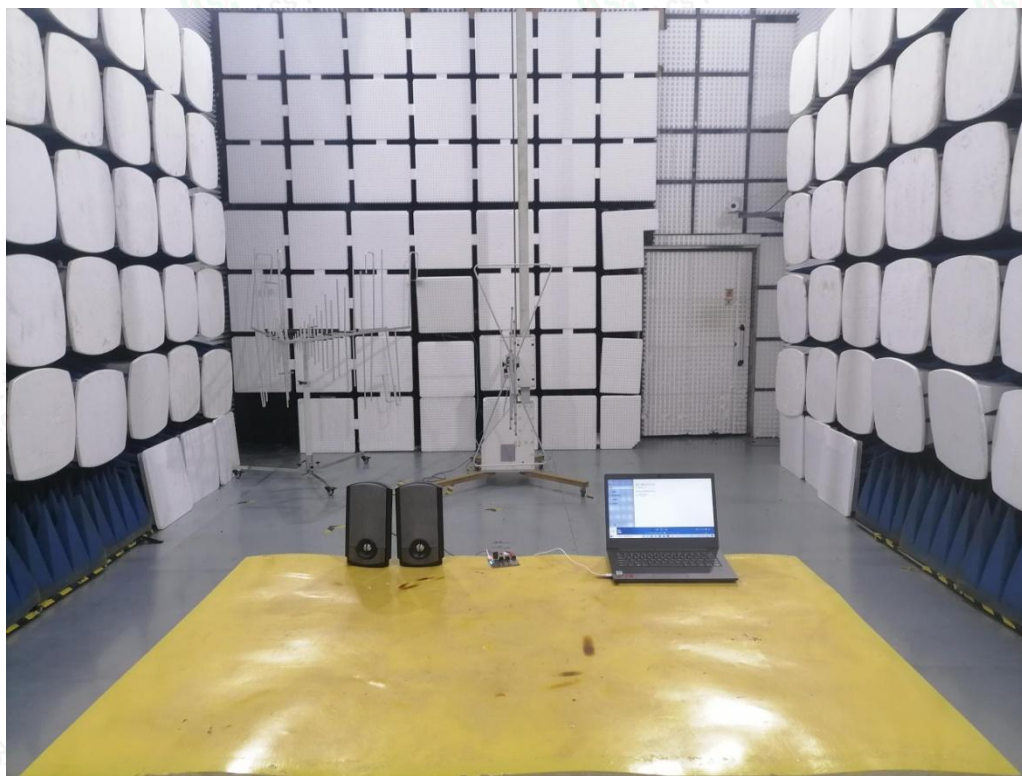
Scan code to check authenticity





## 4. PHOTOGRAPHS OF TEST SETUP

### 4.1. Photo of Radiated Measurement



Shenzhen LCS Compliance Testing Laboratory Ltd.

Add: Room 101, 201, Building A and Room 301, Building C, Juji Industrial Park, Yabianxueziwei, Shajing Street, Bao'an District, Shenzhen, Guangdong, China

Tel: +(86) 0755-82591330 | E-mail: [webmaster@lcs-cert.com](mailto:webmaster@lcs-cert.com) | Web: [www.lcs-cert.com](http://www.lcs-cert.com)

Scan code to check authenticity

## 5. EXTERNAL AND INTERNAL PHOTOS OF THE EUT

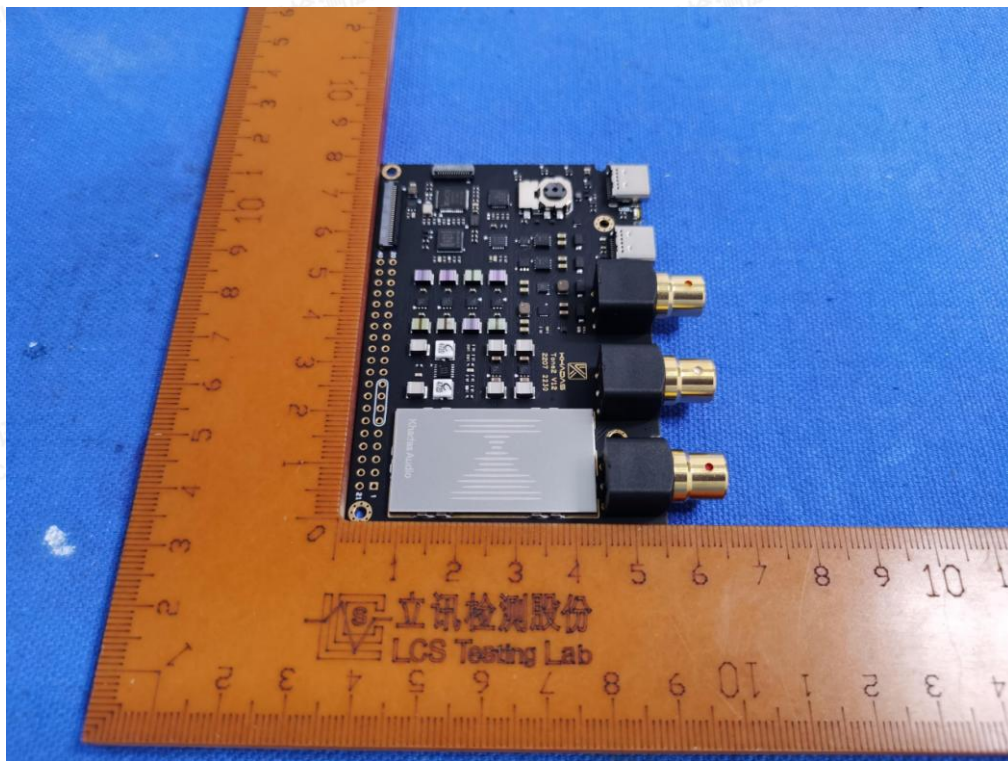


Fig. 1

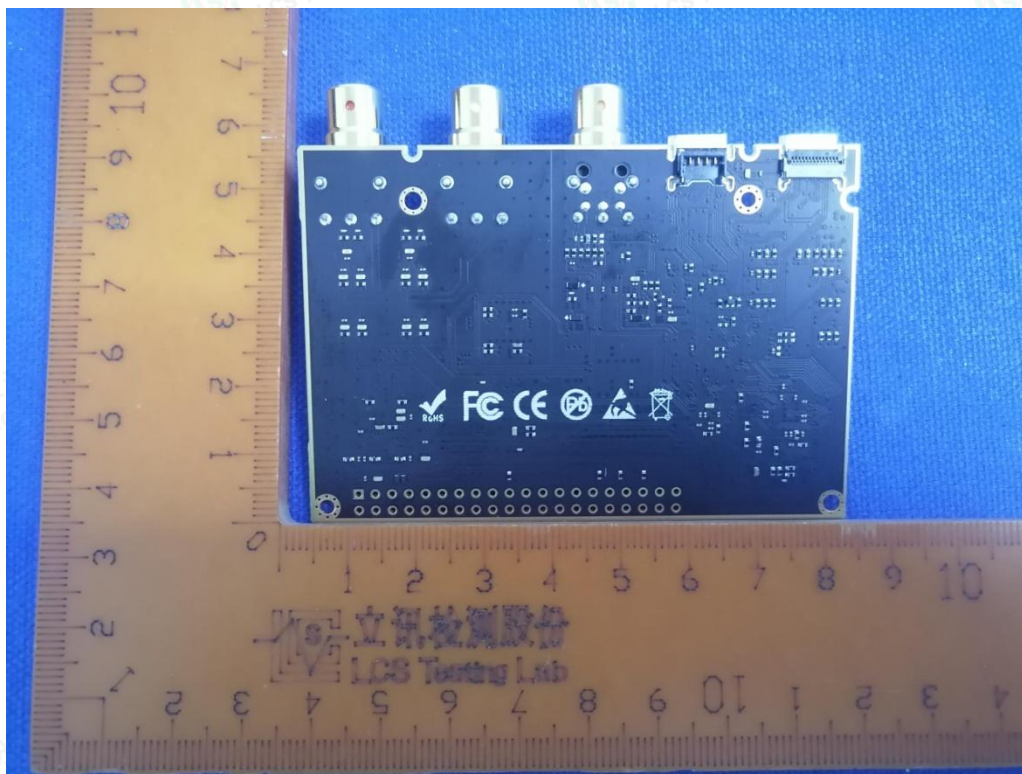


Fig. 2



Shenzhen LCS Compliance Testing Laboratory Ltd.

Add: Room 101, 201, Building A and Room 301, Building C, Juji Industrial Park, Yabianxueziwei, Shajing Street, Bao'an District, Shenzhen, Guangdong, China

Tel: +(86) 0755-82591330 | E-mail: [webmaster@lcs-cert.com](mailto:webmaster@lcs-cert.com) | Web: [www.lcs-cert.com](http://www.lcs-cert.com)

Scan code to check authenticity



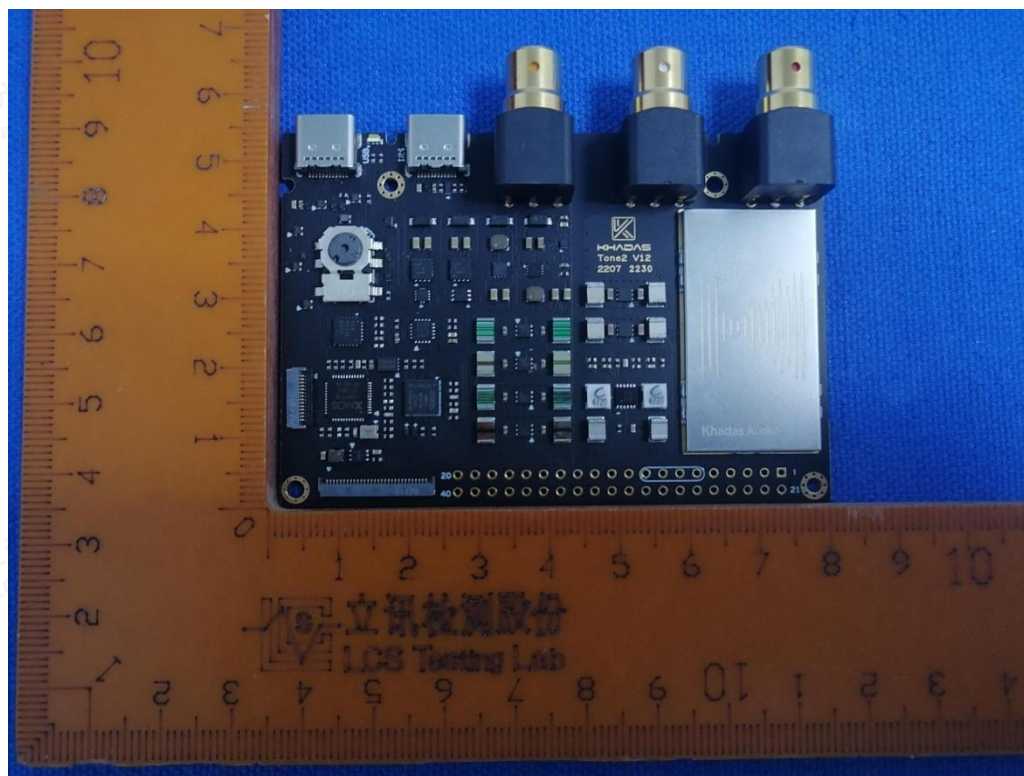


Fig. 3

-----THE END OF TEST REPORT-----



Shenzhen LCS Compliance Testing Laboratory Ltd.

Add: Room 101, 201, Building A and Room 301, Building C, Juji Industrial Park, Yabianxueziwei, Shajing Street, Bao'an District, Shenzhen, Guangdong, China

Tel: +(86) 0755-82591330 | E-mail: [webmaster@lcs-cert.com](mailto:webmaster@lcs-cert.com) | Web: [www.lcs-cert.com](http://www.lcs-cert.com)

Scan code to check authenticity